

Premium Series VibroPressed Slabs

Premium Finish Face Mix Technology with a light shot-blast



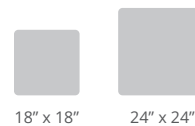
24"x24" Starlight

Our new Premium Series offers a group of special aggregate slabs that are shot blasted to enhance the natural brightness of the aggregates contained on the surface of the slabs. Our colors include Nova, Starlight, Galaxy, Cosmic, and Eclipse.

VIBROPRESS TECHNOLOGY

Our state-of-the-art manufacturing process is able to bring the quality of slabs to the next level. The dimensional accuracy and high flexural strength make the Premium Series the go to slab.

INDIVIDUAL SIZES:



18" x 18"

24" x 24"

Size (in)	Pieces per sq.ft.	Sq.ft. per Pallet	Shipping Weight	PCS / Pallet
"18" x 18" x 2"	0.44	99	1113kg / 2454lbs	44
"24" x 24" x 2"	0.25	88	1000kg / 2200lbs	22

All sizes including 3 mm Spacer Bars



RECOMMENDED APPLICATIONS



Patios



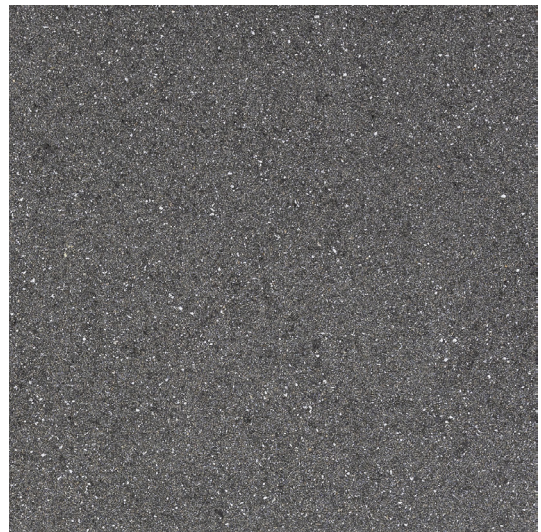
Walkways



Decks



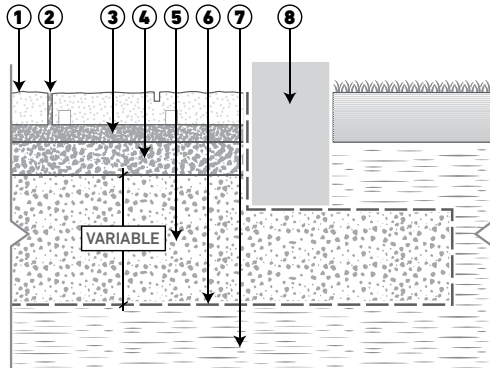
Pedestal Set

**Eclipse****Starlight****Cosmic****Galaxy****Nova**

Installation Instructions:

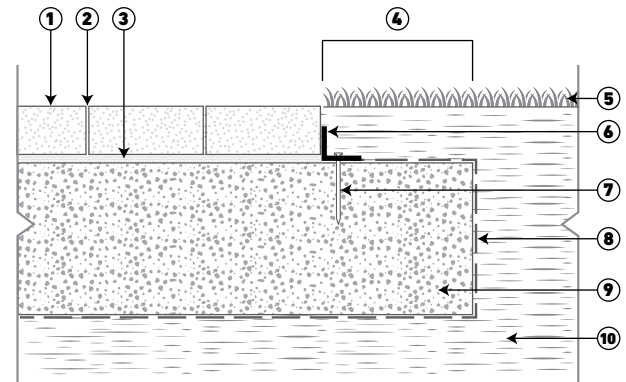
Permeable Installation

FULL EXFILTRATION



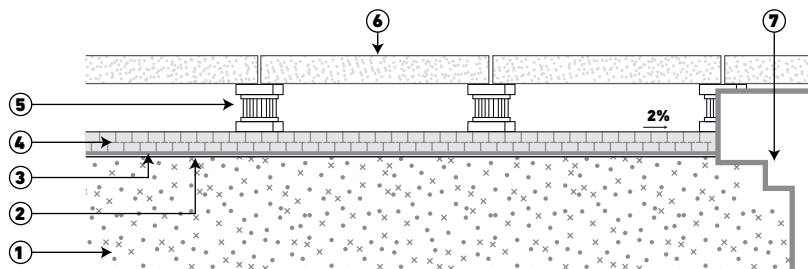
- 1 Slab
- 2 Joint filling material ASTM No 10 (CSA 2-3mm) aggregate
- 3 Bedding course 1 1/5" to 2" (40 to 50 mm) ASTM No 8 (CSA 2.5-10mm) aggregate
- 4 Base course 4" (100mm) ASTM No 57 (CSA 5-28mm) aggregate foundation thickness
- 5 Subbase course ASTM No 2 (CSA 40-80mm) aggregate
- 6 Geotextile (optional)
- 7 Subgrade
- 8 Concrete Edge

Sand Set Installation



- 1 Slab
- 2 Sand joint fill
- 3 Bedding Sand 1"
- 4 Extra width equal to foundation thickness
- 5 Lawn
- 6 Plastic edge or other type of edge restraint
- 7 Nail
- 8 Geotextile (optional)
- 9 Compacted aggregate base with 3/4" minus material
- 10 Subgrade

Pedestal Set Installation



- 1 Structural deck
- 2 Waterproof membrane
- 3 Protection board and/or Drain mat
- 4 Rigid insulation
- 5 Pedestals
- 6 Slab
- 7 Roof drain